

creative meetings

LE MERIDIEN HAMBURG

An der Alster 52
20099 Hamburg
T +49 40 2100 0
lemeridienhamburg.com

ROOMS WITH A VIEW

Discover Le Méridien Hamburg, the lifestyle hotel in the trendy district of St. Georg, right by the Alster lake. Whether you prefer museums, musical theaters, shopping malls or the harbor – Le Méridien Hamburg is the ideal starting point for a city trip or a trade fair visit.

Discover the exhibitions at the Deichtorhallen museum, one of Europe's largest art centers for contemporary art and photography, or enjoy an Alster boat trip – both complimentary due to Unlock Art™.

All 285 elegant rooms and suites offer exclusive furnishings, complimentary WiFi and LED TV. Which view do you prefer: unique view above the Alster lake or the city of St. Georg? We have the right room for you!

ROOMS

- 182 Superior Rooms
- 6 Urban Terrace Rooms
- 32 Deluxe Rooms
- 41 Executive Lake View Rooms

SUITES

- 6 Junior Lake Suites
- 7 Urban Suites
- 5 Duplex Suites
- 1 Panorama Suite
- 3 Lake Suites
- 2 Prestige Lake Suites

OUTLET CAPACITIES

HERITAGE Restaurant

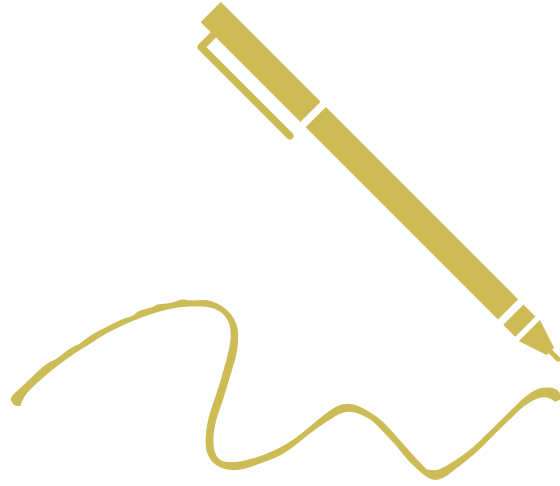
- 170 people seated
- 250 people standing

HERITAGE Bar

- 200 people standing

Latitude Bar

- 150 people standing (reception)



OUR ANSWER TO AN UNBEATABLE LOCATION REQUEST – URBAN AND INDIVIDUAL. LOCATED IN THE HEART OF THE DISTRICT OF ST. GEORG WITH A VIEW OVER HAMBURG'S MOST BEAUTIFUL WATER WORLD. AND YOUR HOTEL ROOM? JUST NEXT DOOR.

N 53° 33' E 10° 0'
DESTINATION UNLOCKED

Le MERIDIEN



MEETING WITH A VIEW.

FROM A NEW PERSPECTIVE

Meetings + partys in twelve new rooms with Alster lake view for up to 150 people. While the new conference centre is part of the hotel, it has a separate entrance but stands alone as an exclusive location for conferences and events. The stage is yours: We are the right place for your car and product presentations and provide the right setting.

- Drivable event lobby (Door W 2.20m x H 2.30m)
- Car placing in front of the hotel entrance
- Possibilities to start and stop in front of the hotel
- 100 parking spaces (more after consultation)
- Underground parking access (W 2.70m, accessible elevation W 3.11m)
- 2x 32 A charging stations
- multiple branding options (entrance, flags, product placements)

CHIC IS THE STYLE

High above the Alster Lake and a ceiling height of four meters – this is the new ballroom at Le Méridien Hamburg. Whether a celebration in the circle of your loved ones or a breathtaking party until sunrise, the location offers a variety of possibilities.

THE ALSTER LAKE JUST A DOORSTEP AWAY, A MEETING CONCEPT "WITH A VIEW", UNIQUE ROOMS AND SUITES AND A DOUBLE-STOREY ROOFTOP BAR WITH OUTDOOR TERRACE ARE WAITING FOR YOU - ALL UNDER ONE ROOF TO FEEL THE URBAN VIBES.



WE HAVE HAMBURG.
AROUND THE CLOCK.

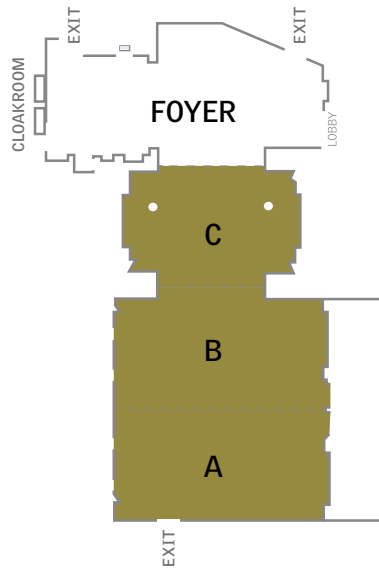
HERITAGE HAMBURG

A glass elevator takes you up to the 9th floor and reveals the beauty you can expect up there: panoramic view of the waterfront. For the Dry Aged Steaks, the fire is lighted every evening in the 800° Southbend oven.

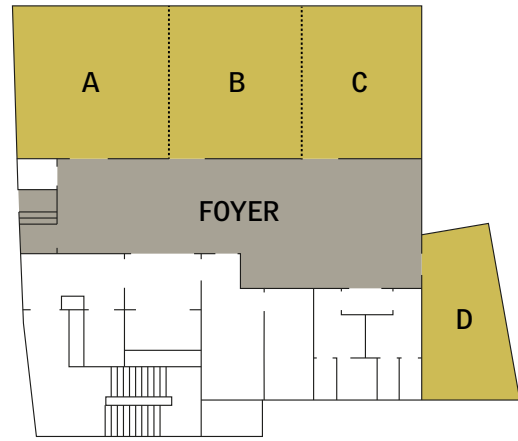
HERITAGE BAR

In the double storey rooftop bar you can enjoy the Alster lake panorama with signature food and drinks.

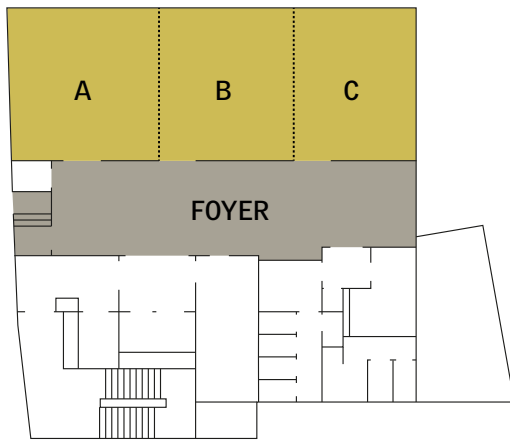
LEVEL 1, GROUND FLOOR



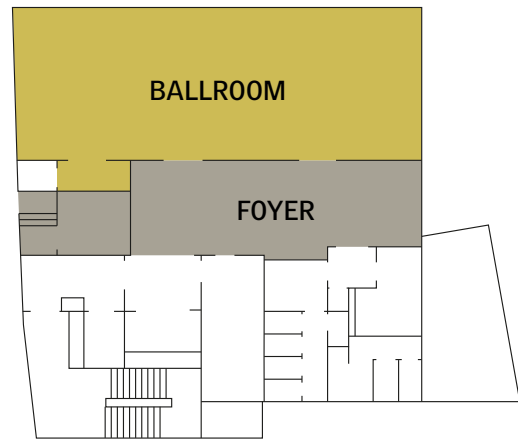
LEVEL 3 + 4



LEVEL 5



LEVEL 6



	Level 1 / ABC	Level 1 / AB	Level 1 / A	Level 1 / B	Level 1 / C	Level 3 / A	Level 3 / B	Level 3 / C	Level 3 / D	Level 4 / ABC	Level 4 / AB or BC	Level 4 / A	Level 4 / B	Level 4 / C	Level 4 / D	Level 5 / ABC	Level 5 / AB or BC	Level 5 / A	Level 5 / B	Level 5 / C	Level 6 BALLROOM
m ²	369	248	132	132	104	49	42	42	32	133	84	49	42	42	32	133	84	49	42	42	168
H	3	3	3	3	3	3	3	3	3	3	3	3	3	3	3	3	3	3	3	3	4
B	24,8	16	8	8	8,8	7	6	6	4	7	7	7	6	6	4	7	7	7	6	6	9
L	15,5	15,5	15,5	15,5	13	7	7	7	8	21	14	7	7	7	8	21	14	7	7	7	19
Parlament	180	135	54	54	24	n/a	n/a	n/a	n/a	60	42	18	18	18	n/a	60	42	18	18	18	80
Theatre	300	250	80	80	50	n/a	n/a	n/a	n/a	120	80	40	40	40	n/a	120	80	40	40	40	150
Board	n/a	60	30	30	24	8	8	8	4	42	28	14	14	14	4	42	28	14	14	14	42
U-Shape	n/a	50	32	32	24	n/a	n/a	n/a	n/a	46	32	14	14	14	n/a	46	32	14	14	14	50
Cabaret	120	100	40	40	20	n/a	n/a	n/a	n/a	36	24	12	12	12	n/a	36	24	12	12	12	54
Banquet	200	90	60	60	30	n/a	n/a	n/a	n/a	72	50	30	30	30	n/a	72	50	30	30	30	100
Connecting options	ja	ja	ja	ja	ja	nein	nein	nein	nein	ja	ja	ja	ja	ja	nein	ja	ja	ja	ja	ja	nein



STEP OUT THE DOOR AND YOU'RE ALMOST THERE

Closest petrol station:
650m | 5 minutes

Closest car wash:
2.7 km | 7 minutes
we offer the possibility to install a mobile washing system on the highest parking level

Main rail station:
1 km | 10 minutes by foot

Hamburg airport Fuhlsbüttel:
11 km | 30 minutes

Public transport at the main rail station:
1 km | 10 minutes by foot



DISCOVERY

Hamburg – one of the world's best cities to live in! The great thing about Hamburg is that you can combine your business suit with a yellow raincoat and be warmed by the city's charm. After the first greeting of "Moin!" followed by a friendly chat you will start to understand – Hamburg folk love their city and are proud of its many facets. Come rain or come shine. This "Gateway to the World" really does bring everyone together. The Nordic charm can be felt everywhere! From the Schanze to the Jungfernstieg, from the Speicherstadt to the Reeperbahn, and from the Alster to the Elbphilharmonie. Allow us to show you our Hamburg. Through the local lens!

- 01 Außenalster | Directly in front of us
- 02 Deichtorhallen – Unlock Art™-Partner | 1.7 km | 20 minutes
- 03 Planten un Blomen | 2 km | 20 minutes
- 04 Jungfernstieg | 1.4 km | 15 minutes
- 05 Townhall | 1.5 km | 15 minutes
- 06 Elbphilharmonie | 3 km | 20 minutes
- 07 Reeperbahn | 4 km | 25 minutes
- 08 Hafencity | 3 km | 25 minutes

